

干工程 选恒旺 事业兴旺

Undertake Projects,
Choose Hengwang,
Prosper in Business!



山东恒旺集团有限公司

Shandong Hengwang Group Co., Ltd.

© 济宁运河经济开发区新材料产业园辰宁路101号恒旺绿色智能制造基地

Hengwang Green Intelligent Manufacturing Base, No. 101, Chenning Road,
New Materials Industrial Park, Jining Yunhe Economic Development Zone

④ <https://en.hengwang.cn>

☎ +86-13583772623

✉ intl@hengwang.cn



 **HENGWANG**



WHEELED EXCAVATOR

轮式挖掘机

HW-180

更加灵活、高效、节能

卓越的性能， 完全满足各类用户需求。

More flexible, efficient, energy-saving
Excellent performance, fully
Meet the needs of various users.

山东恒旺 HW-180 轮式挖掘机，大臂采用双油缸设计，可以承担大规模工程的迫切需求，普遍适用于市政工程、土石方工程、园林绿化、道路修缮、水泥混凝土的破碎、河道清淤、林场抓木、工程钻孔、混凝土整平、装卸货物等各种工程作业环境，轮式挖机行驶速度快，最快速度可达 35 公里 / 小时，可迅速更换各种作业属具，整机配置挖斗、破碎锤、旋转抓、螺旋钻、振动夯、电吸盘等多种属具，满足客户多种工程需求，更换方便、操作简单。

Shandong Hengwang HW-180 wheeled excavator is suitable for municipal engineering, earthwork engineering, landscaping, road repair, cement concrete crushing, river dredging, wood grabbing in forest farms, engineering drilling, concrete leveling, loading and unloading of goods, etc. In various engineering operating environments, the wheeled excavator travels fast, with a maximum speed of 35 km/h, and can quickly replace various operating tools. The whole machine is equipped with buckets, breakers, rotary grabs, augers, vibrating rammers. Various accessories such as electric suction cups can meet various engineering needs of customers, and are easy to replace and easy to operate. The boom is designed with double cylinders, which can undertake large-scale projects.



BRAND NEW UPGRADE NEW EXPERIENCE

全新升级 全新体验

HW-180 机型为了适应大工程配置上的需求，整机底盘采用独立悬挂系统，增大轮距和轴距的设计，全车配置 900-16 轮胎，可吸收路面震动，高速时行驶更稳定；前后轮边减速桥设计，进一步起到减速增扭的作用，增大离地间隙，底盘通过性更高，适应复杂路面的能力更强；前后车桥配置自动锁止功能的差速器，防止挖机的一个驱动桥空转时，迅速锁死差速器，使两驱动桥变为刚性联接。

In order to meet the needs of large-scale engineering configuration, the chassis of the HW-180 model adopts an independent suspension system, which increases the wheelbase and wheelbase design. The whole vehicle is equipped with 900-16 tires, which can absorb road vibration and drive more stably at high speeds. The design of the front and rear wheel-side deceleration bridges further plays the role of deceleration and torque increase, increasing the ground clearance, higher chassis passability, and stronger ability to adapt to complex road surfaces; the front and rear axles are equipped with differentials with automatic locking functions, To prevent one driving axle of the excavator from idling, quickly lock the differential, so that the two driving axles become rigidly connected.



驾驶室 Driver's cab

驾驶室内部配备倒车影像、电子显示屏，行驶更安全；驾驶室前方一体玻璃，视野开阔，密封性好，噪音更低；太空座椅，大大缓解驾驶员的疲劳状态；冷暖空调更舒适；风扇、音响一应俱全。

The interior of the cab is equipped with reversing images and electronic display screens, making driving safer; the integrated glass in front of the cab has a wide view, good airtightness, and lower noise; space seats greatly relieve the fatigue of the driver; heating and cooling air conditioners are more comfortable; Fans and speakers are all available.

液压系统 Hydraulic system

搭载负载敏感系统变量柱塞泵，进口液压系统，整机敏感度更高，响应速度更快，实现发动机 / 泵 / 阀高效匹配，整机作业综合能效比提升。

Equipped with load-sensing system variable plunger pump and imported hydraulic system, the whole machine has higher sensitivity and faster response speed, realizes efficient matching of engine/pump/valve, and improves the overall energy efficiency ratio of the whole machine operation.

动力系统 Power system

搭载康明斯高功率 153KW 涡轮增压发动机，动力输出更稳定，整机操作动作更流畅，油耗低、动力足、扭矩大、好维修。

Equipped with Cummins high-power 153KW turbocharged engine, it has more stable power output, smoother operation of the whole machine, low fuel consumption, sufficient power, high torque and easy maintenance.

轮胎 Tire

标准配置充气橡胶胎，机动灵活、转场便利、造价低、油耗小、行走速度快，对地表损害小，橡胶轮胎还有减震缓冲功能；也可根据客户工作环境，更换实心轮胎，承重能力更强，应付较恶劣的工作环境。

The standard configuration is pneumatic rubber tires, which are flexible, easy to move, low in cost, low in fuel consumption, fast in walking speed, and small in damage to the ground. The rubber tires also have the function of shock absorption and buffering; solid tires can also be replaced according to the customer's working environment. Stronger, to cope with harsher working environment.

灵活高效 全面能手

Flexible and efficient all-rounder



松土器 Scarifier



抓木器 Wood grabber



拇指夹 Thumb clip



破碎锤 Hammer



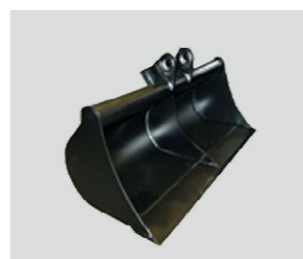
机器耙 Machine rake



螺旋钻 Auger



窄挖斗 Narrow bucket



翻斗 Tipping bucket

精工细作 品质保证

Fine workmanship, quality assurance



推土铲 Dozer blade



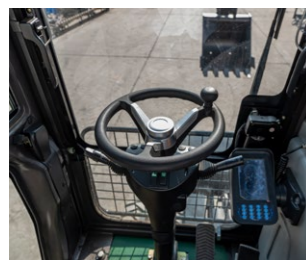
支腿 Outrigger



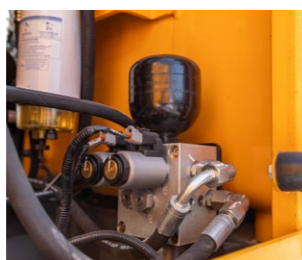
座椅 Seat



液压安全锁 Hydraulic safety lock



方向盘 Steering wheel



油源阀 Oil source valve



液晶显示屏 Liquid crystal display



空调 Air conditioner

技术参数

Machine detailed parameters

整机配置 Machine configuration		
整机重量 Total Weight	17500	kg
发动机型号 Engine model	康明斯 Cummins 6BTAA5.9	
发动机功率 Engine power	153	kW
泵 Pump	电控负载敏感变量柱塞泵 Electrically controlled load sensitive variable displacement plunger pump	mm
燃油箱容量 Fuel tank capacity	220	L
阀 Valve	多路阀 Multi-way valve	
液压油箱容量 Hydraulic oil tank capacity	180	L
工作压力 Work pressure	31.5	MPa

外形尺寸 Dimensions		
总长 Total length	7540	mm
总宽 Total width	2550	mm
总高 Total height	3740	mm
轮距 Wheelbase	2000	mm
轮胎型号 Tire type	900-16	
轮胎数量 Tire quantity	8	个
动臂长度 Boom length	4800	mm
驾驶室高度 Cab height	3255	mm
轴距 Wheelbase	2670	mm
斗杆长度 Stick length	3135	mm

作业范围 Scope of work		
最大挖掘高度 Maximum Digging Height	9422	mm
最大挖掘深度 Maximum Digging Depth	5525	mm
最小转弯半径 Minimum turning radius	7250	mm
最大卸载高度 Maximum dump height	7200	mm
最大挖掘半径 Maximum Digging Radius	8750	mm
尾部最小回转半径 Minimum turning radius of tail	2400	mm
斗杆挖掘力 Digging force of stick	60	kN
挖斗容量 Bucket capacity	0.8	m ³
行走速度 Walking speed	28-35	km/h
铲斗挖掘力 Bucket Digging Force	85	kN
爬坡能力 Gradeability	35	°
回转速度 Swing speed	13-14	r/min

注：由于技术不断更新，材料和技术规范如有更改，恕不另行通知，照片上的机器可能包括附加设备，具体配置请咨询业务员。

Note: Due to the continuous updating of technology, materials and technical specifications are subject to change without prior notice. The machine on the photo may include additional equipment. Please consult the salesman for specific configuration.

维修和保养

Maintenance and repair



便捷保养

Convenient Maintenance

电气件集中安装，打开前盖板即可维护，操作方便。

覆盖件采用全钢件，经久耐用可回收。

采用大面积覆盖件开启方式，打开后可站在地面进行日常维护和保养，维修方便、接近性好。

空气滤清器、油水分离器、燃油滤、机油滤、保险盒等触手可及，保养十分方便。

润滑脂加注：黄油加注口布置挖机同侧，润滑保养更方便。

散热器：外部专设护网，脏物被挡在护网外侧，只需将护网拆下清洗即可。

The electrical components are installed centrally, and the maintenance can be done by opening the front cover, which is easy to operate.

The cover is made of all steel, which is durable and recyclable.

It adopts the opening method of the large-area cover. After opening, it can stand on the ground for daily maintenance and maintenance. It is convenient for maintenance and good in accessibility.

The air filter, oil-water separator, fuel filter, engine oil filter, fuse box, etc. are within easy reach, making maintenance very convenient.

Grease filling: The grease filling port is arranged on the same side of the excavator, which is more convenient for lubrication and maintenance.

Radiator: There is a special protective net on the outside, and the dirt is blocked outside the protective net. You only need to remove the protective net for cleaning.

售后服务

After sales service



24 小时热线 24 Hours Telephone

您有任何需要，只需要拨打 24 小时售后服务热线 400-9975-666。

If you have any needs, just call the 24-hour after-sales service hotline 400-9975-666.



15 分钟回复 15 Minutes To Respond

接到售后需求后，售后服务工程师将主动和您取得联系，向您了解设备情况和服务需求，通过电话，微信视频等远程指导处理问题。After receiving the after-sales demand, the after-sales service engineer will take the initiative to get in touch with you, ask you about the equipment situation and service needs, and deal with the problem through remote guidance such as telephone and WeChat video.



24 时出发 24 hours departure

若电话指导无法处理好故障，服务工程师在 24 小时内携带维修工具出发，前往设备所在现场，进行现场维修服务。

If the telephone guidance cannot handle the fault well, the service engineer will set off with the maintenance tools within 24 hours, go to the site where the equipment is located, and perform on-site maintenance services.



重大情况处理 Handling of major situations

重大和特殊情况，服务体系将启动快速反应机制、专家支持机制和配件绿色通道。

In major and special circumstances, the service system will start a rapid response mechanism, an expert support mechanism and a green channel for accessories.



电话回访 Telephone interviews

现场服务完工后，公司总部呼叫中心将有服务专员对每次服务进行电话回访，跟踪完成情况和 service 质量，听取客户意见和建议并反馈到各职能部门进行落实和改善，以便为客户提供更优质的售后服务。

After the on-site service is completed, the call center of the company's headquarters will have a service specialist to conduct a return call for each service, track the completion status and service quality, listen to customer opinions and suggestions, and feed back to each functional department for implementation and improvement, so as to provide customers with better quality.



卓越的性能
完全满足各类用户需求
Excellent performance Fully meeting various user needs



高新技术企业
High-tech enterprises

全国机械行业文明单位
National Model Unit in the Machinery Industry

全国煤炭机械工业优秀企业
National Outstanding Enterprise in Coal Machinery Industry

对外贸易重点入库企业
Key Enterprise in Foreign Trade Database

中国工程机械工业协会会员单位
Member Unit of the China Construction Machinery Industry Association

COMPANY PROFILE

公司介绍

山东恒旺集团 创立于 2011 年，坐落于运河之都、孔孟之乡的中国文化名城——山东济宁。历经十余年的发展，现已发展成为一家集设计研发、生产制造、国际贸易、电子商务、网络服务、物流运输为一体的创新科技企业。厂区占地面积 30 余万平方米，现有员工 2000 余人。2024 年 10 月，总投资 10.1 亿元人民币的恒旺机械设备智能化生产基地，在济北高新技术产业园落成并投产。

以研发之长，领技术之先。恒旺依托科技创新，依据市场发展和客户需求，不断研发出各种新型实用机械设备。当前主营产品覆盖推土机、挖掘机、装载机、平地机、压路机、钻桩设备、零部件等四十多个品类。产品远销非洲、北美、拉丁美洲、东南亚、中亚、欧洲及一带一路沿线等 180 多个国家。

恒旺集团自成立初期就构建了较为完备、多元化的市场经营体系和产业价值链。在恒旺集团发展的十余年中，始终坚持立足本土，内强研发，外拓海外，摸索出一条适合自身发展的“互联网+传统制造业”的创新之路，跻身跨境电商新型产业模式之中，迈上持续快速发展的新台阶和跨越式发展的新时代。

恒旺始终践行“创新驱动、质量为先”的发展理念，全面推进

产品升级。在智能化改装领域持续取得突破，远程操控已成功应用于多种钻桩设备，施工安全得到真正保障；挖掘机领域突破多项技术难题，不断推出各种新型挖改设备，全力帮助客户实现一机多用，从而实现更高收益。

一直以来，恒旺集团不断加快知识产权标准化建设，重视培养、培育人才，以管理创新、技术创新推动公司持续发展。在坚持自主创新的道路上，先后获得各类专利 200 余项。精雕细琢，品质卓然，并先后通过 ISO、欧盟 CE、法国 BV 等十余项质量、安全检测等项目认证。

信誉为上，服务为本。通过多年的客户服务实践，恒旺建立起产品体验、用户培训、维修保障、配件供应“四维一体”的一站式服务体系并持续完善，为客户提供一体化施工解决方案，人性化、智能化的优质服务得到广大客户的一致好评和认可。

恒旺秉承“持恒心、守恒德、做恒业”的核心价值观，致力于让最广泛的客户享受最高性价比的产品和服务，朝着“建百年企业，创百年品牌”的发展方向不断前行。

干工程，选恒旺，事业兴旺！

Shandong Hengwang Group was founded in 2011 and is located in Jining, Shandong, a famous Chinese cultural city known as the capital of the canal and the hometown of Confucius and Mencius. After more than ten years of development, it has now developed into an innovative technology enterprise integrating design and development, manufacturing, international trade, e-commerce, network services, and logistics and transportation. The factory covers an area of more than 300,000 square meters and currently has more than 2,000 employees. In October 2024, the Hengwang Machinery and Equipment Intelligent Production Base with a total investment of 1.01 billion yuan was completed and put into production in the Jibei High-tech Industrial Park.

With the strengths of R&D, leading the technology. Relying on technological innovation, Hengwang continues to develop various new practical machinery and equipment based on market development and customer needs. The current main products cover more than 40 categories including bulldozers, excavators, loaders, graders, rollers, pile drilling equipment, and spare parts. Products are exported to more than 180 countries including Africa, North America, Latin America, Southeast Asia, Central Asia, Europe, and along the Belt and Road.

Since its inception, Hengwang Group has built a relatively complete and diversified market operation system and industrial value chain. In the more than ten years of Hengwang Group's development, it has always adhered to the local development, strengthened internal research and development, and expanded overseas, exploring an innovative path of "Internet + traditional manufacturing" suitable for its own development, and has entered the new industrial model of cross-border e-commerce, stepping onto a new stage of sustained and rapid development and a new era of leapfrog development.

Hengwang has always practiced the development concept of "innovation-driven, quality first" and comprehensively promoted

product upgrades. In the field of intelligent modification, continuous breakthroughs have been made, and remote control has been successfully applied to a variety of pile drilling equipment, and construction safety has been truly guaranteed; in the field of excavators, many technical difficulties have been broken through, and various new excavation and modification equipment have been continuously launched to help customers achieve multiple uses of one machine, thereby achieving higher returns.

Hengwang Group has been continuously accelerating the standardization of intellectual property rights, attaching importance to the cultivation and training of talents, and promoting the company's sustainable development with management innovation and technological innovation. On the road of insisting on independent innovation, it has successively obtained more than 200 patents of various types. It is meticulously crafted and has outstanding quality. It has successively passed more than ten quality, safety testing and other project certifications such as ISO, EU CE, and French BV.

Reputation is the most important thing, service is the basis. Through years of customer service practice, Hengwang has established a one-stop service system of "four-in-one" product experience, user training, maintenance guarantee, and spare parts supply, and has continued to improve it, providing customers with integrated construction solutions. The humanized and intelligent high-quality services have been unanimously praised and recognized by customers. Hengwang adheres to the core values of "maintaining perseverance, maintaining virtue, and doing a constant business", and is committed to allowing the widest range of customers to enjoy the most cost-effective products and services, and moving forward in the direction of "building a century-old enterprise and creating a century-old brand".

Undertake Projects, Choose Hengwang, Prosper in Business!